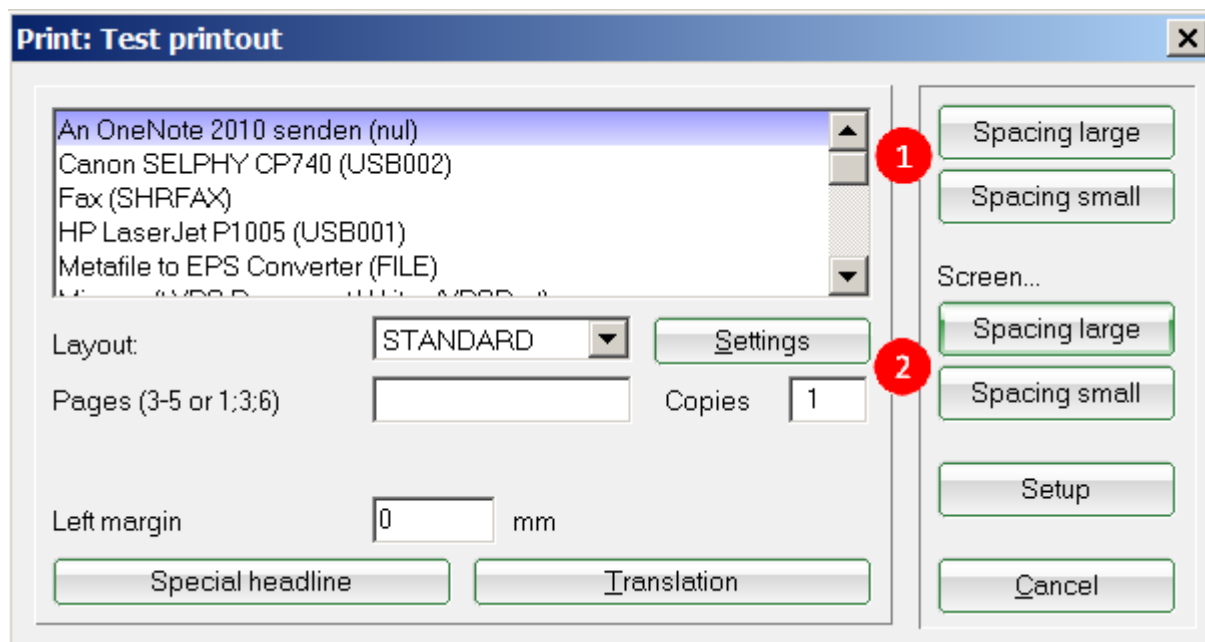


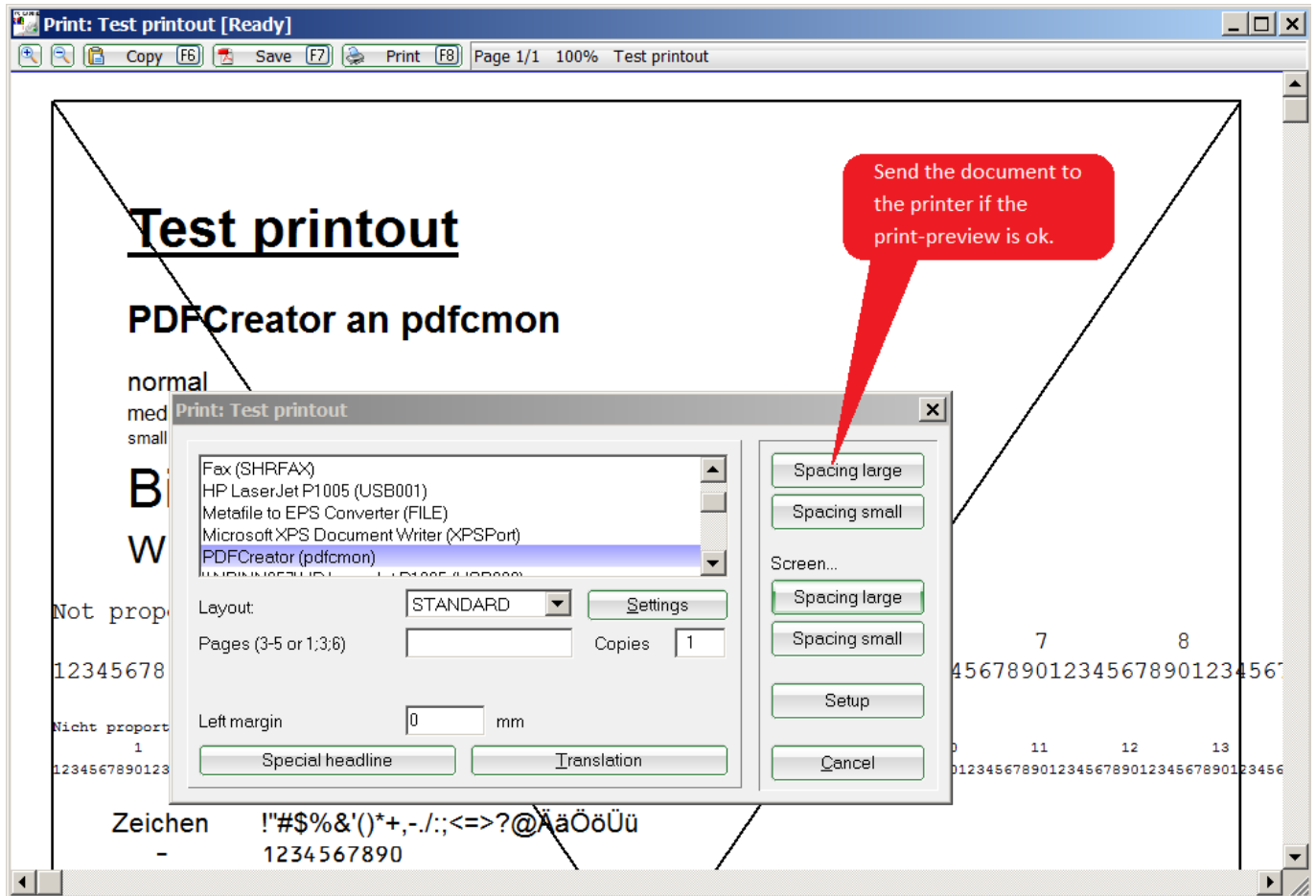
# Printer


You can find all the printers installed on your computer under **Setup/Printer**.



1. Use the upper two buttons to send the document to the printer.
2. Use the next two buttons for a print preview.

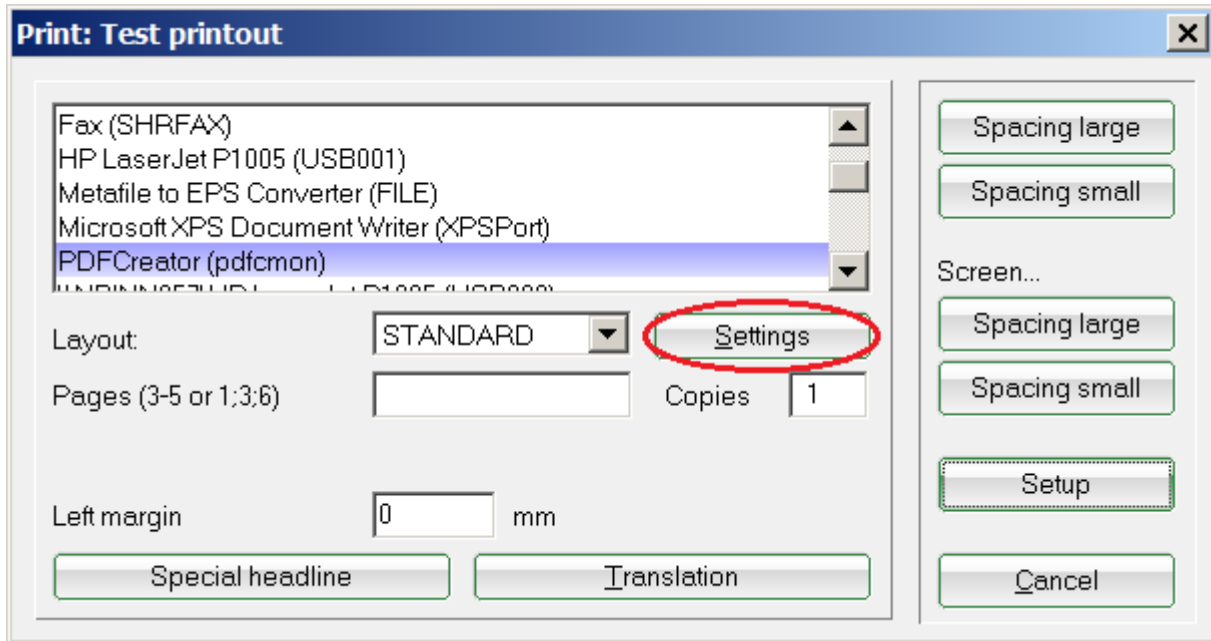
HINT: Here you can quickly and easily test the printing from PC CADDIE:




 More detailed settings are usually not necessary with PC CADDIE. However, if you want, for example, to always use a particular printer for bag tags, you can store this information in a template. Please do not hesitate to contact the [PC CADDIE Support](#).

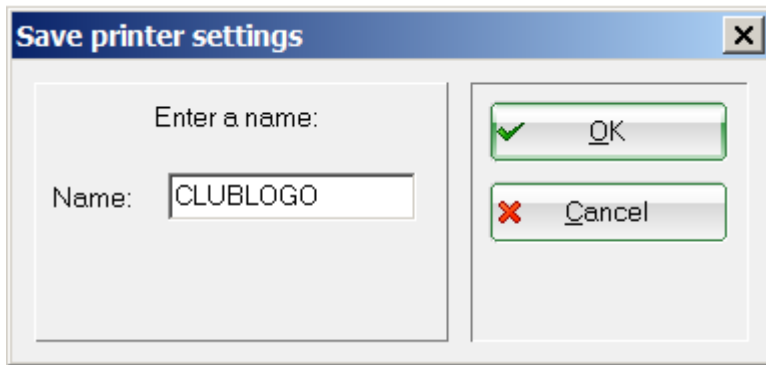
## Create new layout

PC CADDIE offers you the possibility to work with various different layouts (for example a clear, legible font for lists, an elegant slightly larger font and a logo for invoices, etc.). These settings can be made in the printer dialog under **Setup/Printer**.

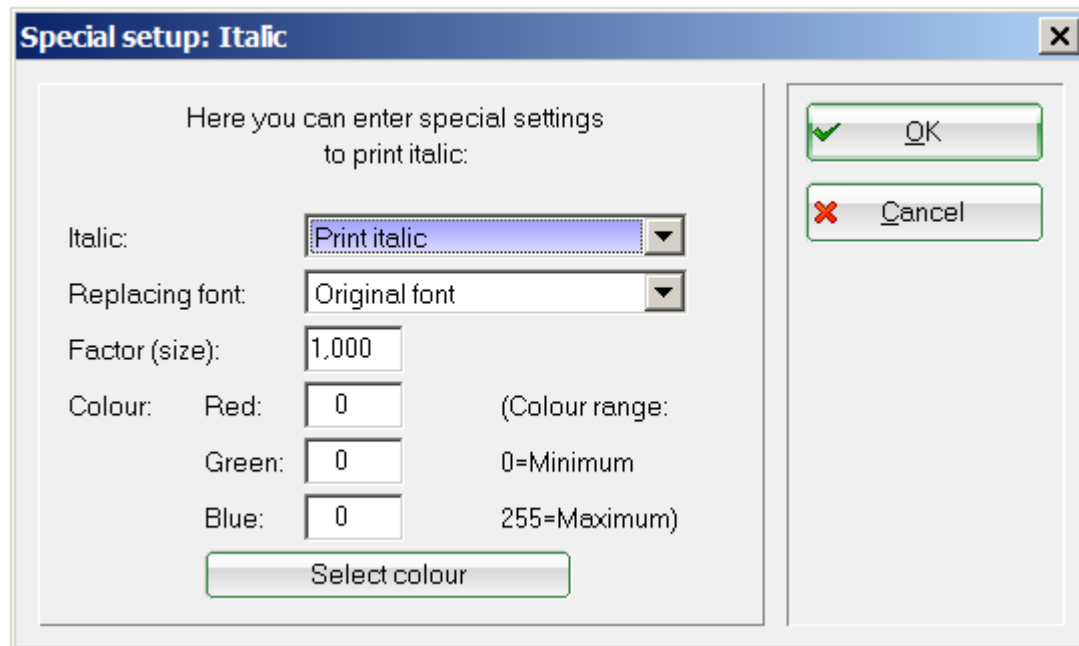


Press **Settings** to open the basic settings of the selected layout. The desired changes can be made and stored accordingly.





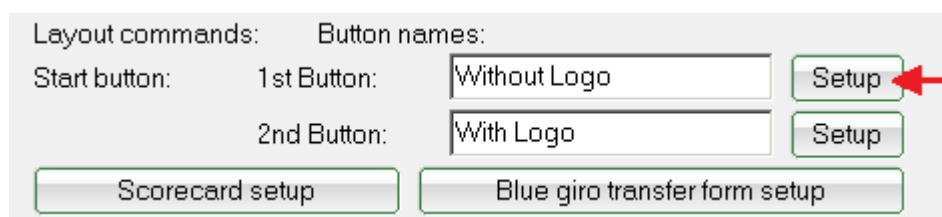
5. You can also define individual colors, if you want to use colored printers (for example, for Eclectic lists).



Click on the corresponding **Setup** buttons for making the settings described at (1).

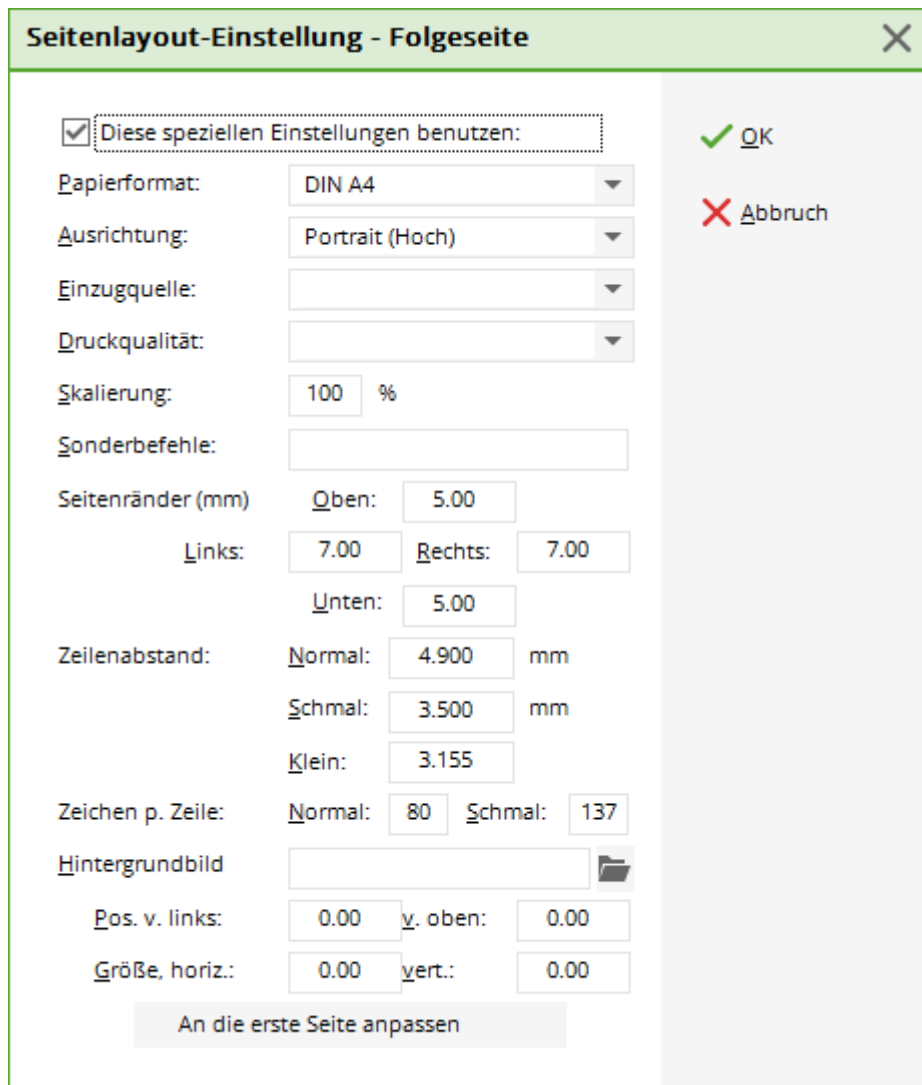


The two options are independently of one another and do not have to have anything in common.

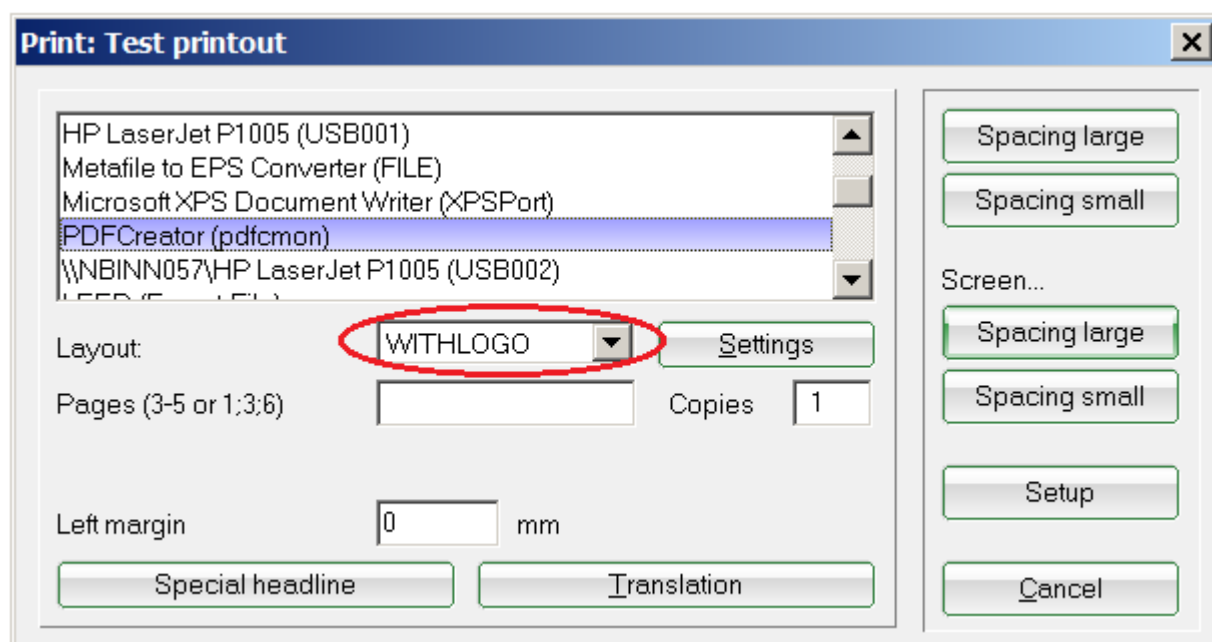


This will open the main settings menu or the selected print layout:

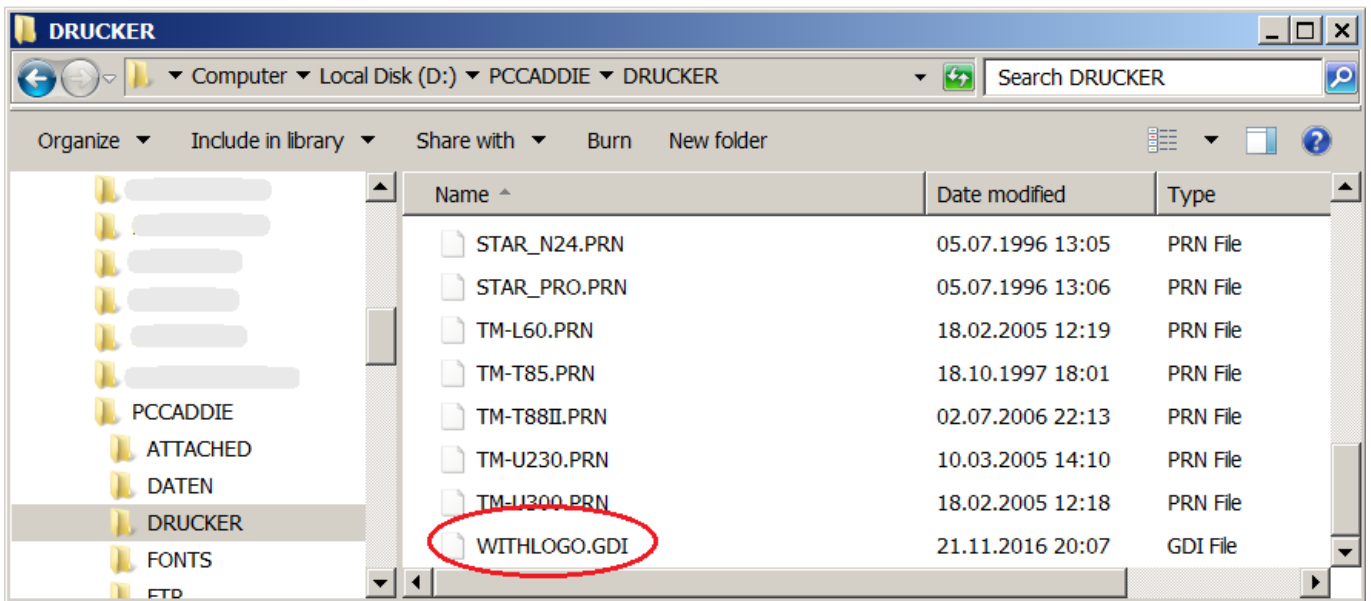
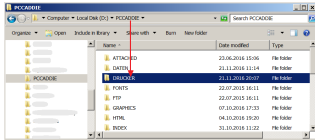




## Delete old layout



These layouts are stored in the PCCADDIE/DRUCKER folder (or “Drucker” = printer in German).



Right-click on the GDI files and press “Delete” for removing them.

## Print text translation

There are some predefined, non-changing texts or dialogues in PC CADDIE. For example, the contributions' list is displayed in a fixed format in the layout of the financial statements:



Mr.  
Paul Member  
StreetName 11  
54333 CityName                      Date: 21.11.2016

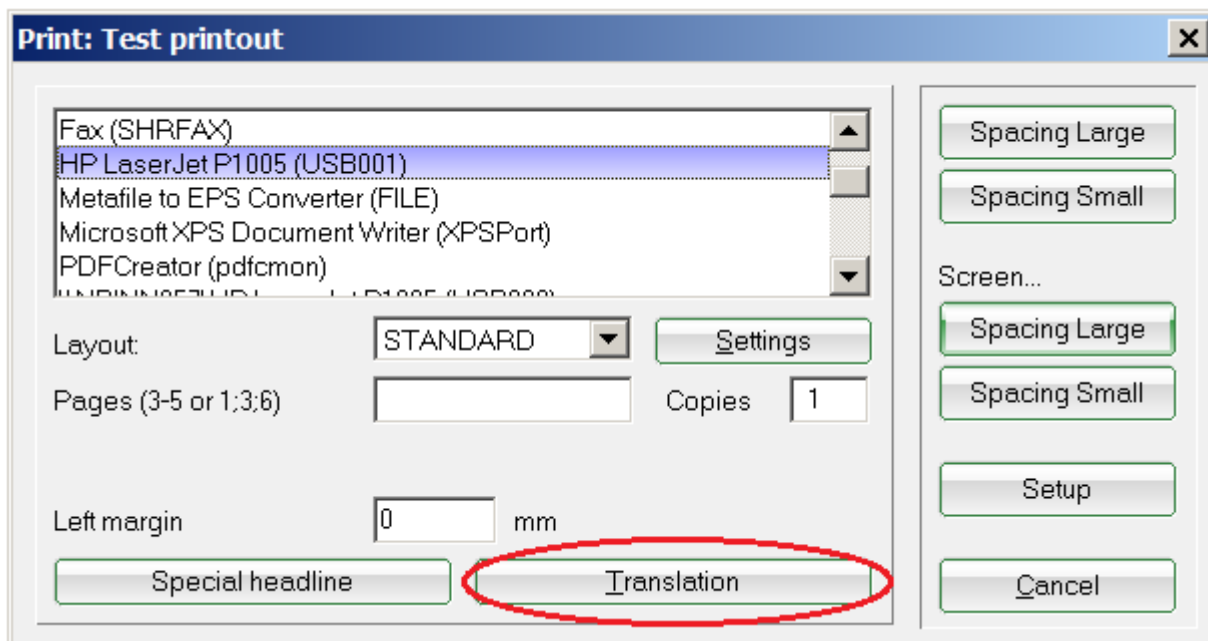
**Invoice** 20160096

Dear Mr. Member

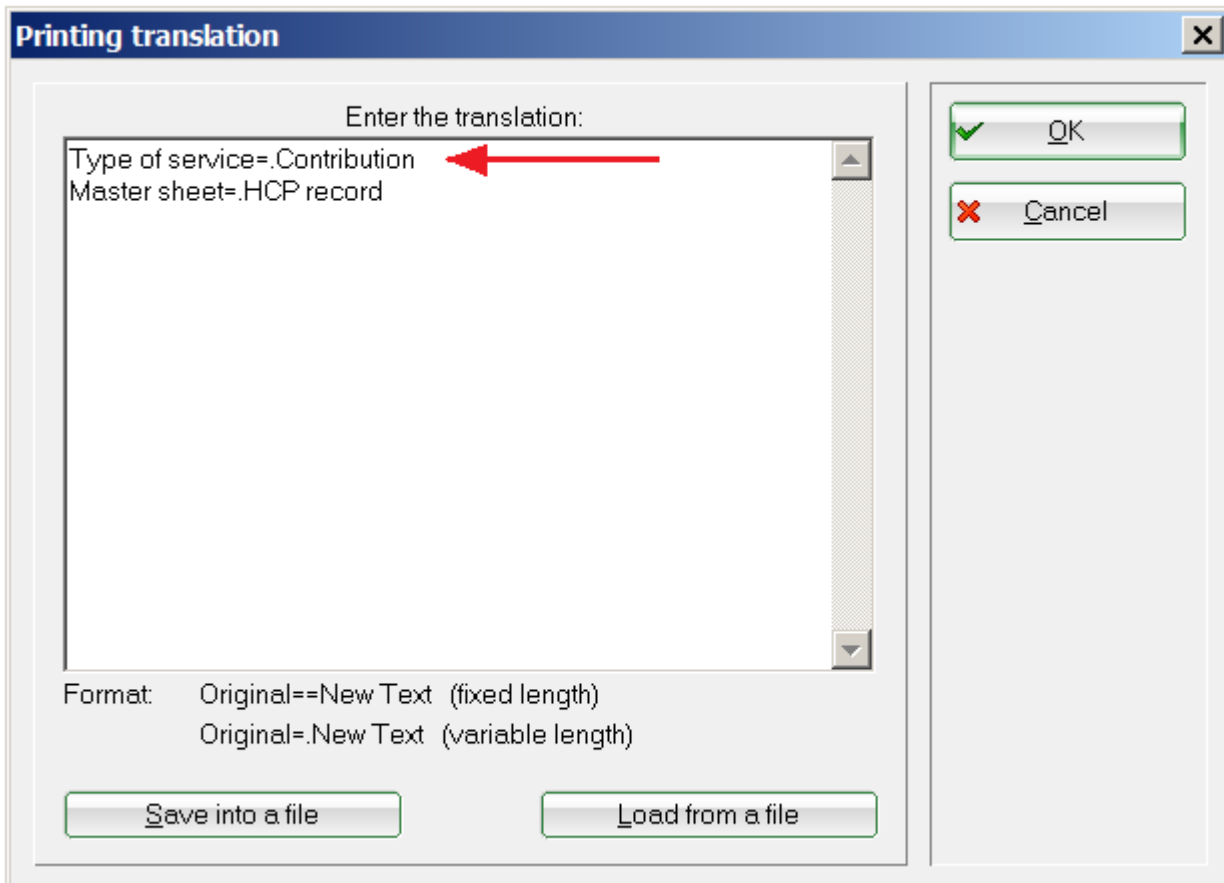
We hereby present you the club fee balance.  
In detail, the following contributions are made

Type of service	VAT	Net/CHF	Gross/CHF
Paul Member			
Annual contribution teenagers <M>	8.0%	925.93	1000
Annual contribution teenagers <M>	8.0%	925.93	1000

Click on the button **Translation** to enter the print dialog where you can enter the print text translation:



The following window opens:



Enter the text you want to change, and the new text.

Mr.  
 Paul Member  
 StreetName 11  
 54333 CityName                      Date: 21.11.2016

**Invoice** 20160096

Dear Mr. Member

We hereby present you the club fee balance.  
 In detail, the following contributions are made

Contribution	VAT	Net/CHF	Gross/CHF
Paul Member			
Annual contribution teenagers <M>	8.0%	925.93	1000
Annual contribution teenagers <M>	8.0%	925.93	1000

The original text is now replaced by the new one.



Note that this translations affects all PC CADDIE areas. For example, translating „bar“ to „cash“

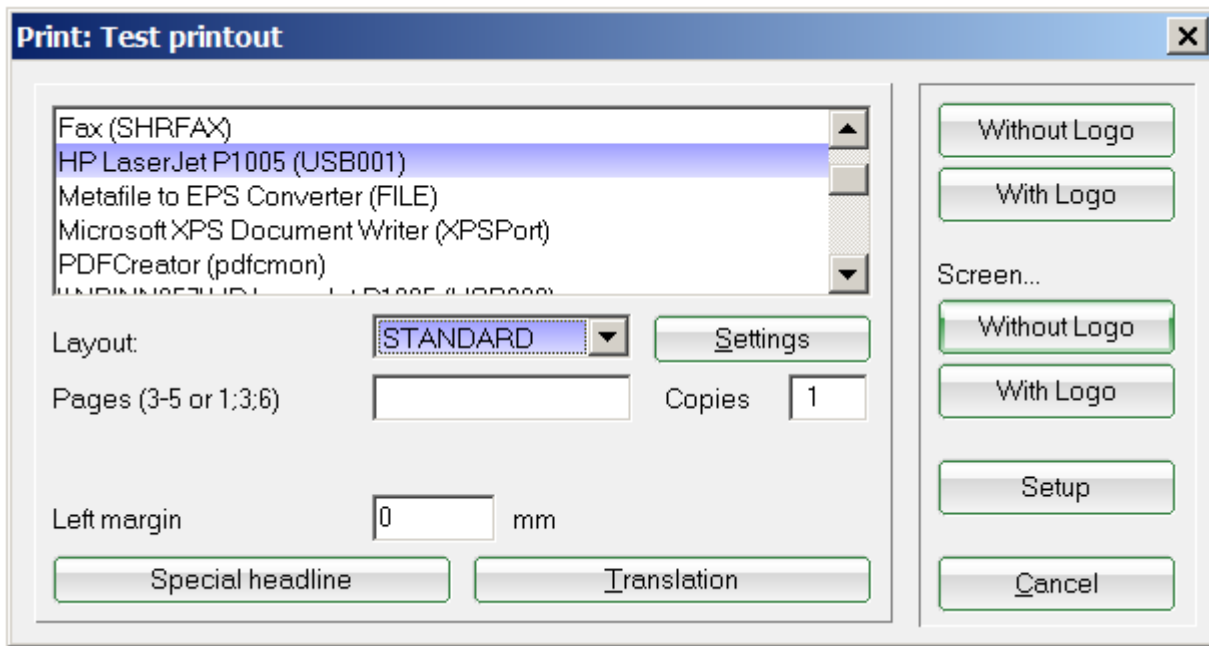
also transforms „Barbara“ in „cashcasha“ 😊. Remove temporary translations after use them, or be aware that you cannot control every consequence of the print text translation.

HINT: **Setup/Program Options/ Print text translation** directly opens the [Translation of print text](#).

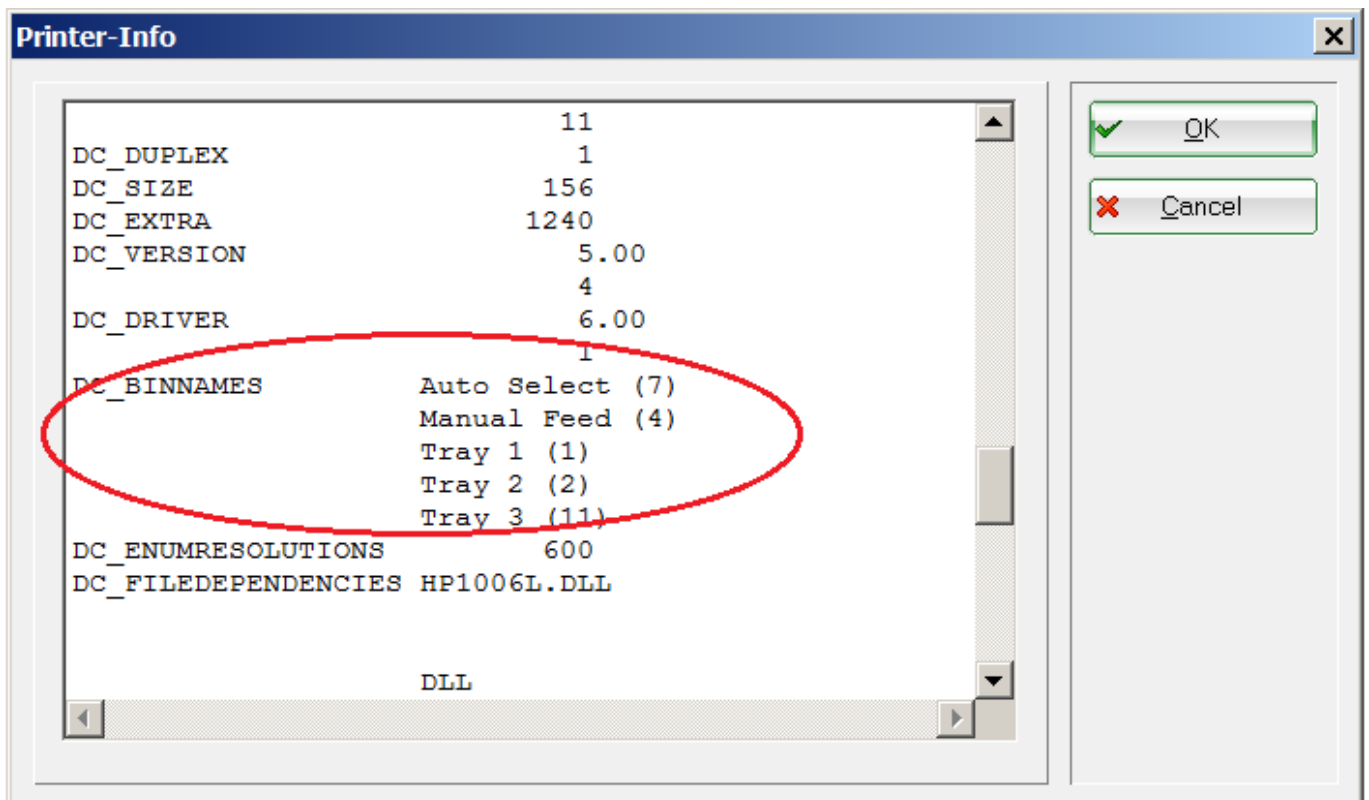
# Tray selection

Make the following settings for configuring PC Caddie to automatically select a printer tray.

## Setup/Printer



Select the printer and press **Shift (ctrl) + F11**. The following window opens:



Scroll to DC\_BINNAMES.

Enter the tray's number in the marked brackets ().

Then go to **Settings**.

The screenshot shows a dialog box titled "Setup print layout". It has two columns: "Layout commands:" and "Button names:". Under "Layout commands:", there are two rows: "Start button:" and "2nd Button:". Under "Button names:", there are two rows: "1st Button:" and "2nd Button:". The "1st Button:" field contains "Spacing Large" and has a "Setup" button next to it, which is circled in red. The "2nd Button:" field contains "Spacing Small" and has a "Setup" button next to it. At the bottom, there are two buttons: "Scorecard setup" and "Blue giro transfer form setup".

For using the command SOURCE: enter the same tray number as before. In this example, 1.

The screenshot shows a dialog box titled "Seitenlayout-Einstellung". It has a close button (X) in the top right corner. On the right side, there are two buttons: "OK" (with a green checkmark) and "Abbruch" (with a red X). The main area contains several settings:

- Papierformat: DIN A4
- Ausrichtung: Portrait (Hoch)
- Einzugquelle: (empty)
- Druckqualität: (empty)
- Skalierung: 100 %
- Sonderbefehle: SOURCE:1 (circled in red)
- Seitenränder (mm):
  - Oben: 5.00
  - Links: 7.00
  - Rechts: 7.00
  - Unten: 5.00
- Zeilenabstand:
  - Normal: 4.900 mm
  - Schmal: 3.500 mm
  - Klein: 3.155
- Zeichen p. Zeile:
  - Normal: 80
  - Schmal: 137
- Hintergrundbild: G:\EIGENE~1\2008\KLASSE.B
- Pos. v. links: 135.00
- y. oben: 31.00
- Größe, horiz.: 60.00
- vert.: 0.00

At the bottom, there is a button labeled "Spezial-Einstellung Folgeseiten".