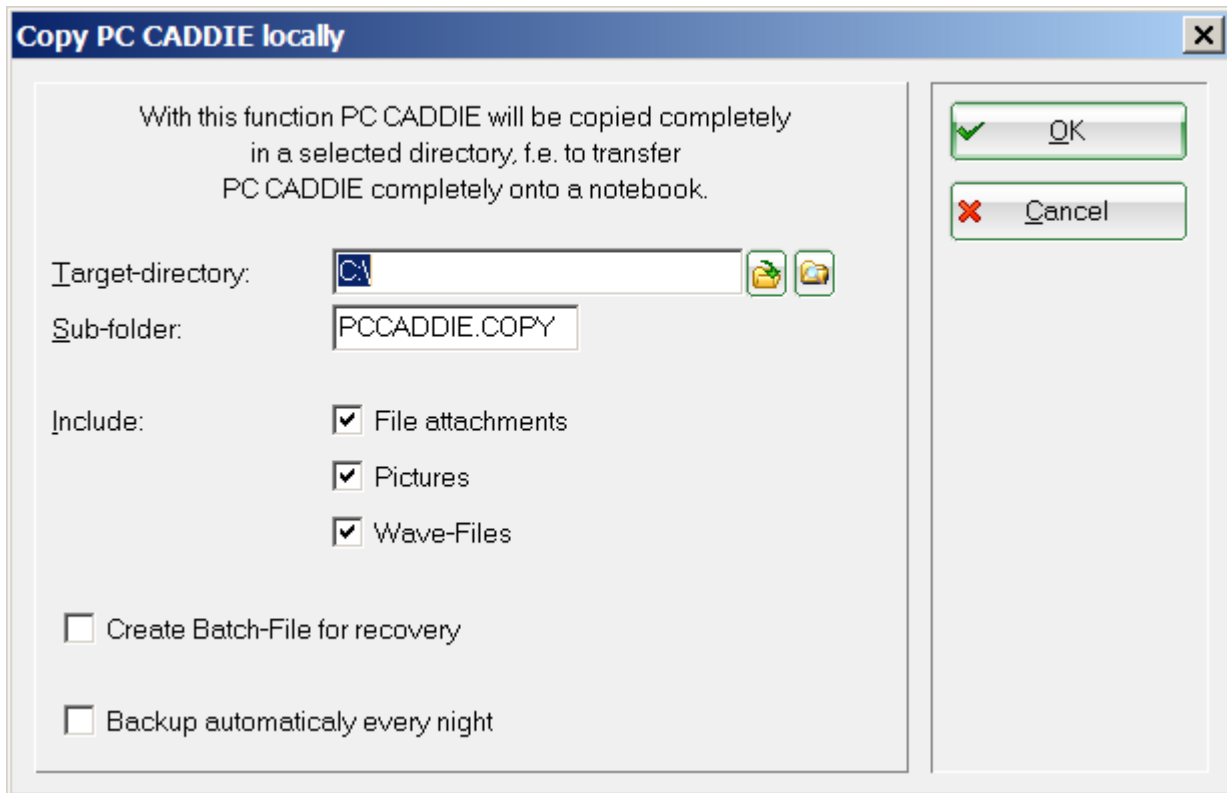


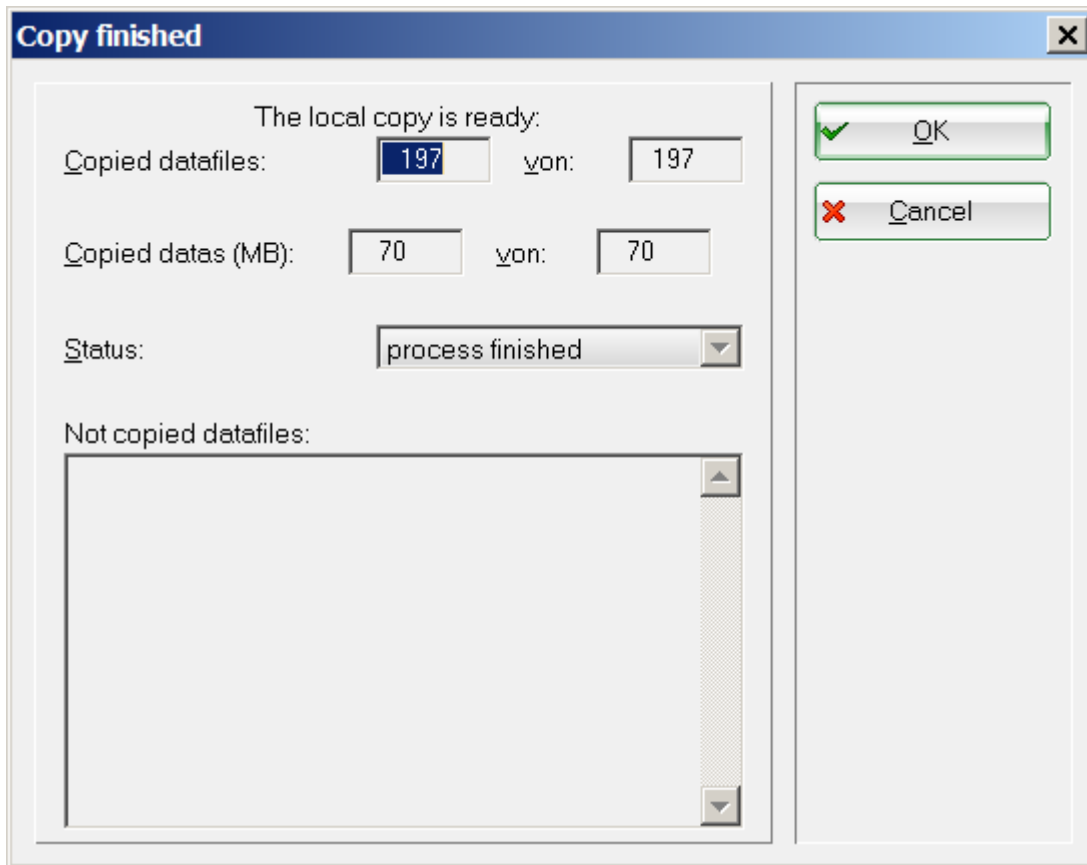
Creating a full local copy

You can manually create a complete local copy, including specialized attachments, using the menu item **Exit/Create complete local copy**.

If this menu item is not available in your PC CADDIE version, enter the special parameter **COPY_LOCAL** under **Setup/Program Options/Club Address, Banking details** in the tab **General**, which you can access using the button **Extra**, and restart your PC CADDIE.



The destination directory is automatically set to C:\. The copy will be saved under the name PCCADDIE.COPY, and it is replaced by a new version every time you repeat the process; rename the older copy if you want to keep it. You will be informed about the size of the file after the copy is created.



This back-up does not replace the regularly back-up on the server.

Please contact the PC CADDIE Support if you want to use this back-up option.