

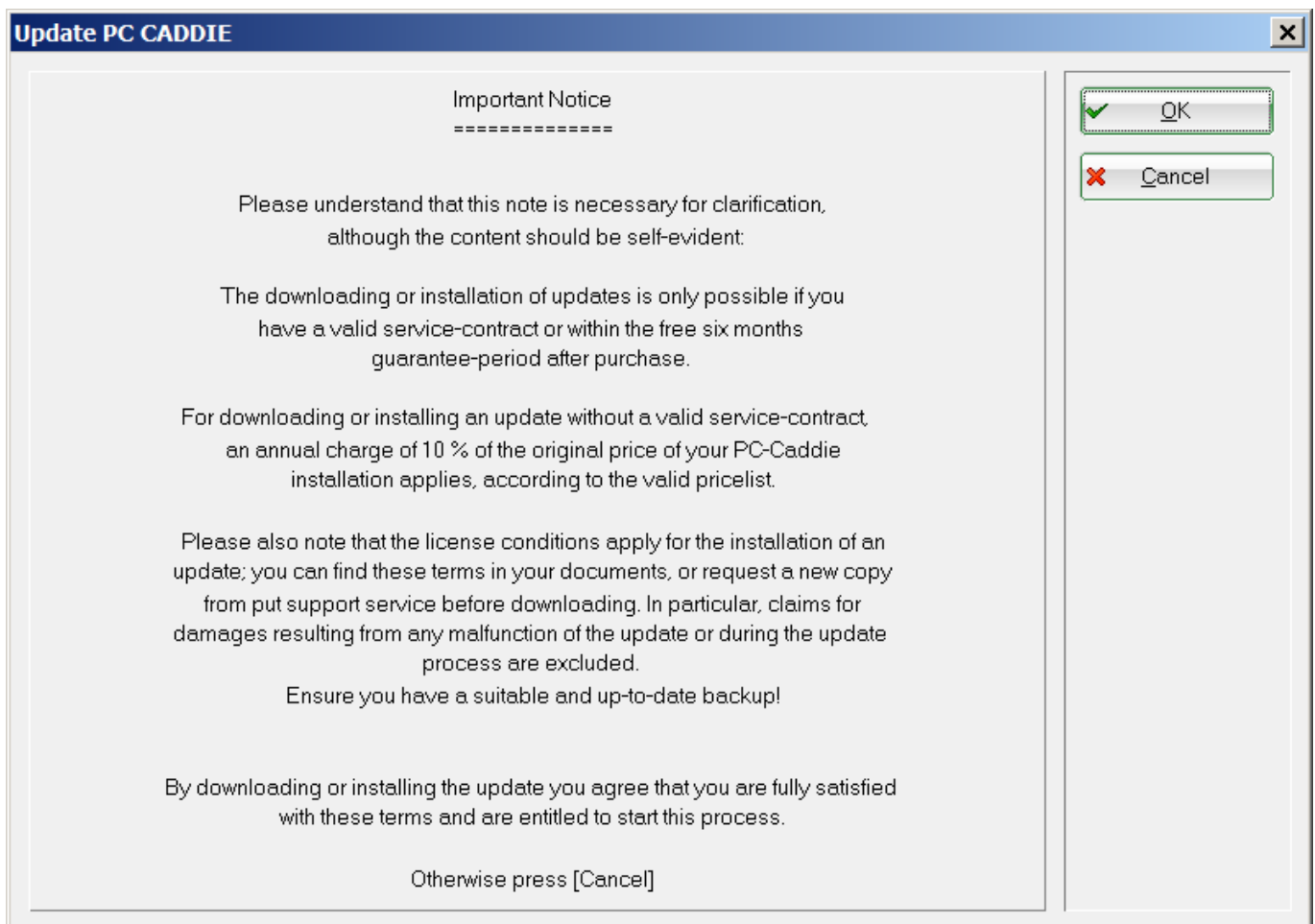
Update PC CADDIE



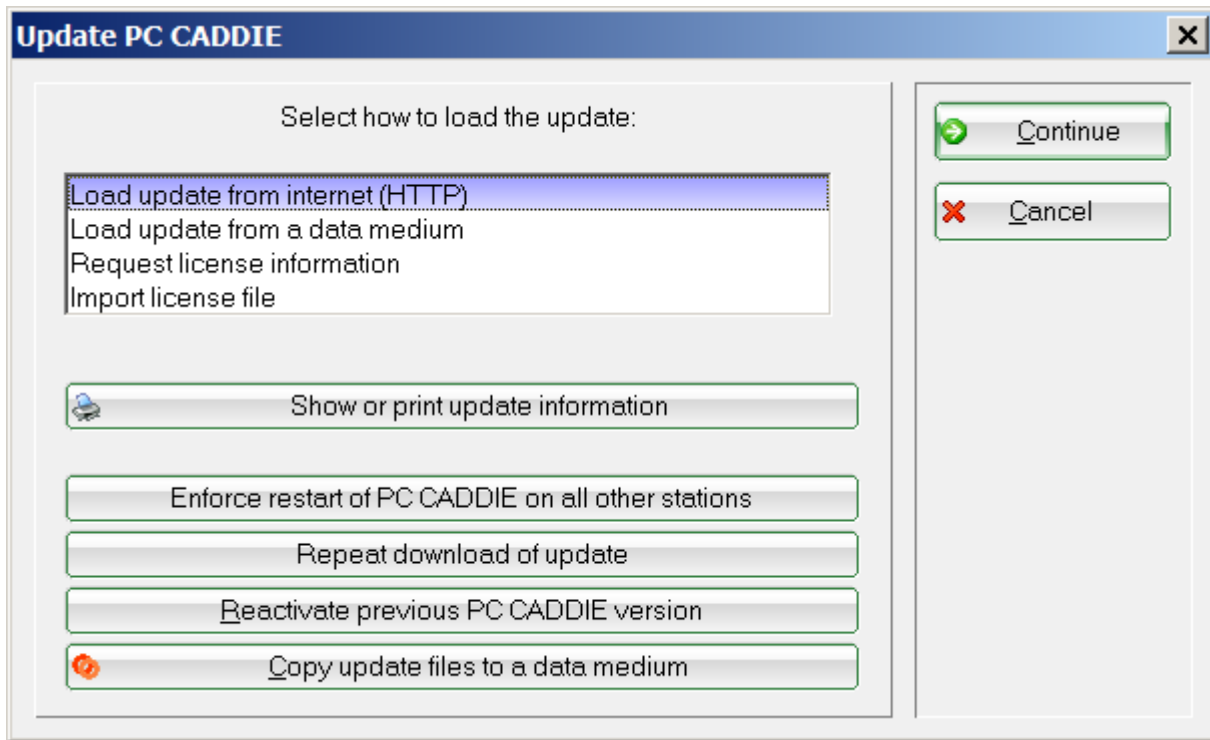
Updating PC CADDIE is important for a functioning system. Check regularly whether a new update can be loaded.

Via **End/Update PC CADDIE** the following window will open, which you should close with please confirm with **OK** to confirm:

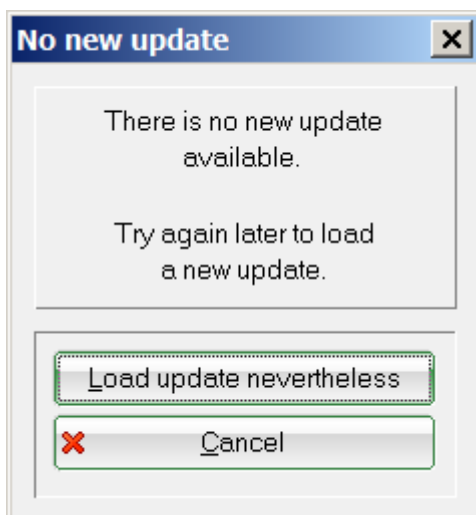
In newer versions, start the update via **System/PC CADDIE update** or via the green „i“ in the top right-hand corner and then **Update PC CADDIE**



Follow the next windows and confirm with **Next**. Normally it is not necessary to make any changes to the preset selection:

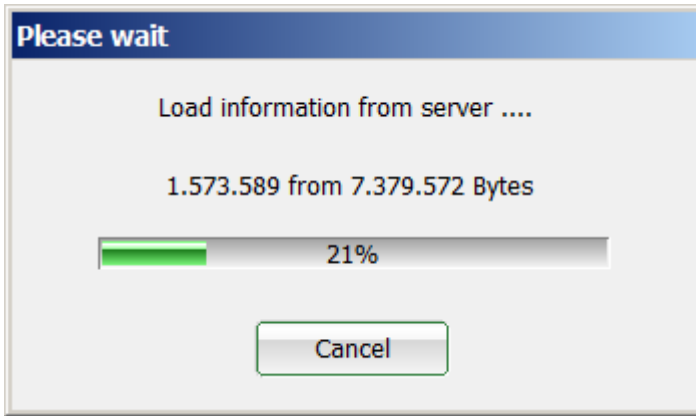


If the system is already up to date, you will see the following window:

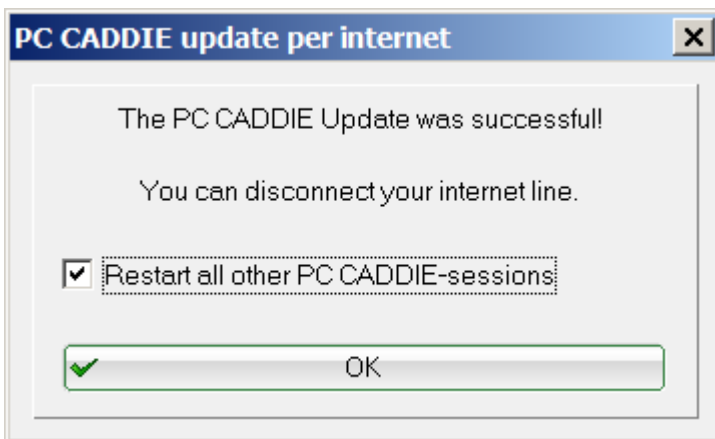


You can press **Cancel** to exit the window.

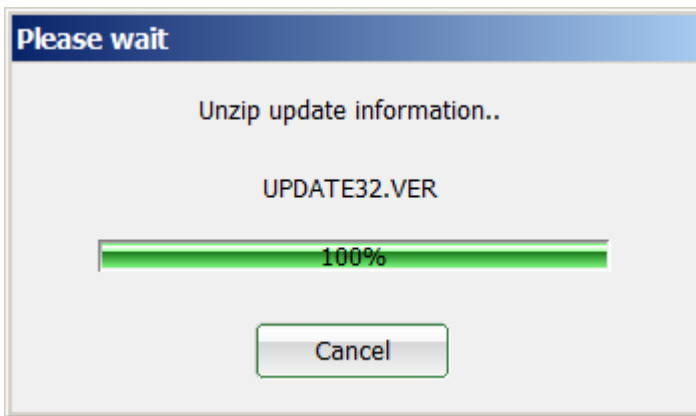
However, if a more recent version is available, PC CADDIE will then automatically start loading an update:



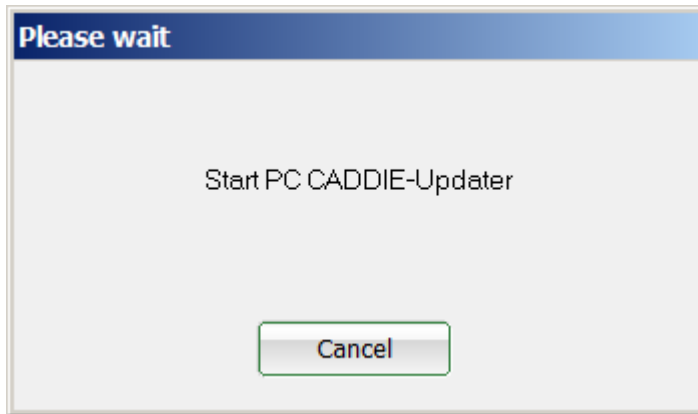
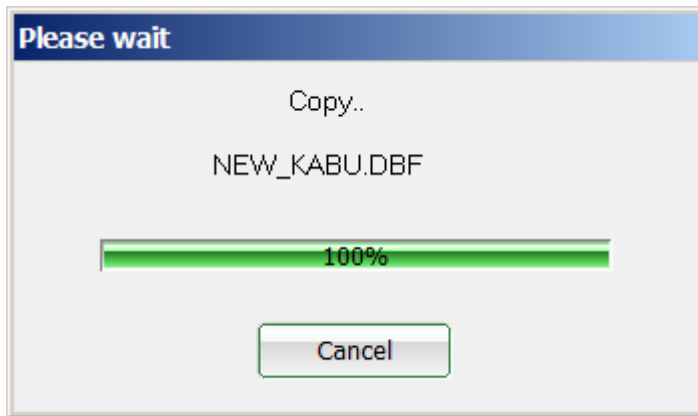
After successful loading, the next window opens and PC CADDIE plays the previously loaded update after confirming with **OK** automatically:



You will then receive the following window: PC CADDIE unpacks the newly loaded files.



Confirm with **OK** the system is updated via an installation routine and PC CADDIE is automatically restarted:



After a successful update, the window with the password query opens and you can now log in again. log in again.

