

# Open online interface



This module exports data from PC CADDIE for displaying it on your website.

## Open online tournament interface

The so-called Open online interface is a separate PC CADDIE module that generates tournament lists in XML format and makes them available for further processing. This function is used when lists are to be integrated into an external homepage or an info screen. If the module is licensed, the button **Parameters** appears in the Intranet Information window of the competitions.

Intranet-Informationen (interne ID: 30)

Turniername: PC CADDIE Cup  
Spielform: Vierball - Stableford; 18 Löcher

Informationen | Kategorien | Spielerzahl | Meldegrenzen | Funktionen

Ausrichter: Club DGV-ID: 490000331538  
Bemerkung: Sponsor: Schmedding Software Systeme  
Nenngeld-Info: 30 € für Mitglieder, 45 € für Gäste  
Start: Tee: 1 Zeit: 10:00 Uhr  
Anzeige-Status: Meldeliste, Startliste und Ergebnisliste  
Teamergebnisse: (keine Teamwertung zeigen)  
Turnier ladbar für diese Clubnummern: 0499001

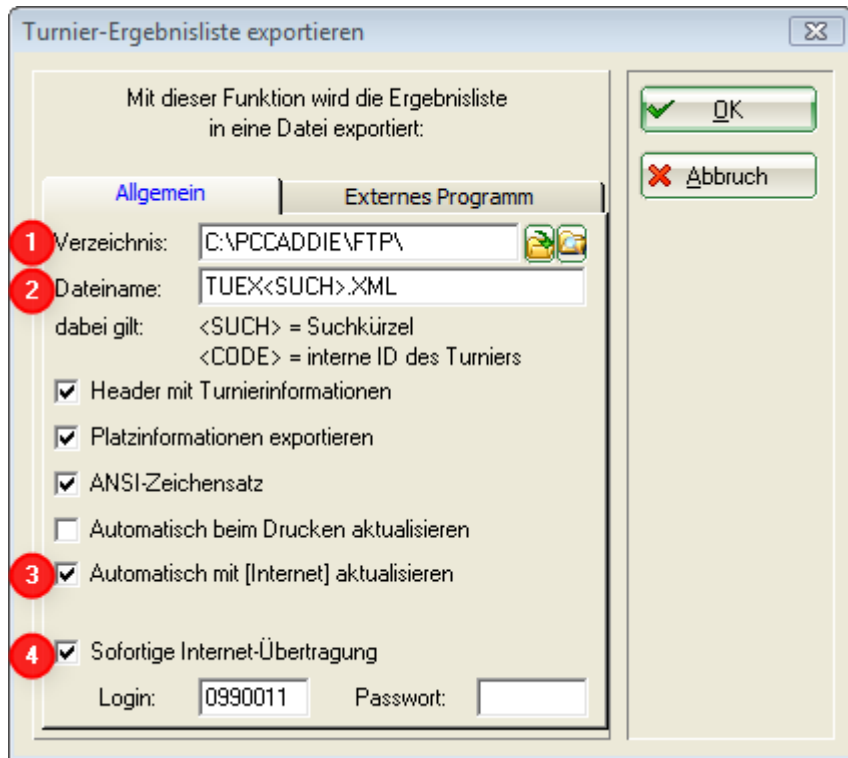
Wettbewerb-Informationen im IIS öffnen

Zuletzt gestartet: 16.07.10 13:47

Alle Spieler per Intranet prüfen  
Meldeliste ins Intranet stellen  
Startliste ins Intranet stellen  
Ergebnisliste ins Intranet stellen

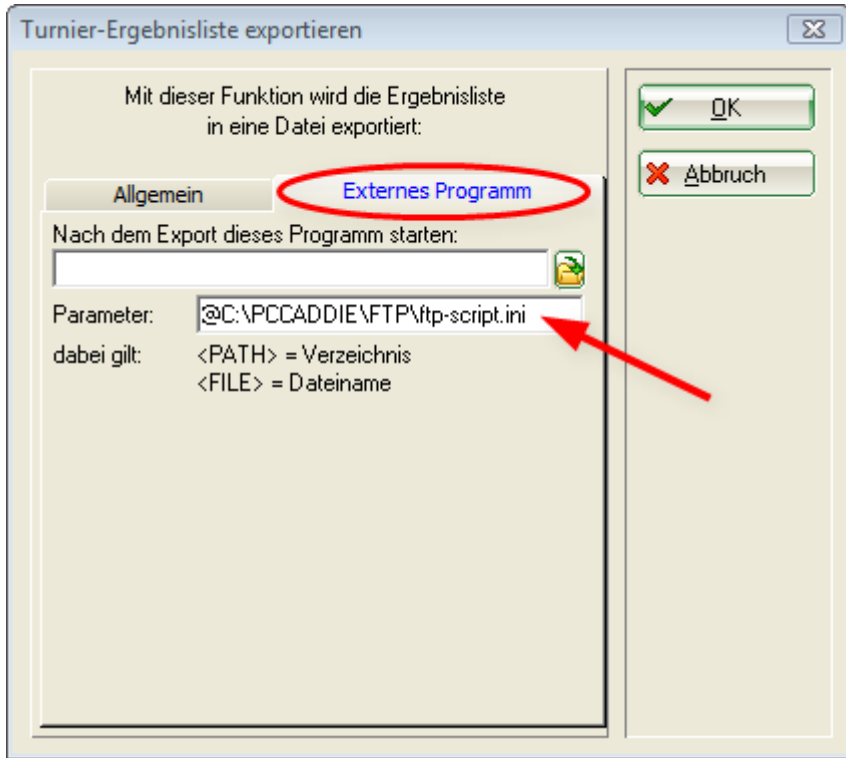
OK  
Kopieren (F6)  
**Parameter**  
Export  
Abbruch

The settings for the future XML export can be made here:



1. Enter the path where the file should be saved. It is recommended to use the FTP folder in the PC CADDIE main directory.
2. Name of the export file - can also be slightly different but respecting the same naming conventions (for example, T-<SUCH>.XML).
3. The automatic update function starts the export as soon as the connection to the intranet is established. The existing file is overwritten with the current one should there have been changes.
4. The immediate intranet transmission is the actual interface for Startzeit.com customers, and updates the advertisement immediately on the provider's homepage..

The tab **External program** defines what is done with the exported file. It is possible to start the direct upload with an \*.ini file.



Parameters for calling the \*.ini file which subsequently triggers the upload.

File that starts the upload.



The file must be structured as in the example. Server address , login, password etc. The customer has to communicate this FTP access data of the external server to PC CADDIE.

```

ftp-script.ini - Editor
Datei Bearbeiten Format Ansicht ?
[SERVER]
ADDRESS=www.pccaddie.com 1
LOGIN=administrator 2
PASS=golf08 3
DIALUP=F
DEBUG=F

[WAIT]
SECONDS=0
PAUSE=0

[LIST]
LINE1="UP_DEL , T*.XML , C:\PCCADDIE\FTP\ , /upload" 4

```

1. Address: server address
2. Login: server login
3. Pass: server password
4. Line1: Command line - performs the following task: Line1 = upload then delete, start the file that corresponds to the following name (file name filter: T\*.XML, local path: C:\PCCADDIE\FTP, server path: /upload)

The file can now be processed by the recipient.

## Open online timetable interface

PC CADDIE://online Tee time Service and special parameters, which are inserted by us, are required to send timetable data to an external receiver (for example info screen with display loop).

This function places a file called TTEX in the FTP folder; this file can then be used by an external program to generate the timetable view.

## Open online person interface

A special parameter is also required for the export of persons via FTP. As soon as this has been inserted by someone from PC CADDIE, the corresponding sub- menu **FTP export** appears in the **Persons** menu item.

The following dialog shows the basic settings for the FTP upload of a \*.txt file to a web server (for example):

1. Which group of people should be exported?
2. When should the export start, or should the process be started automatically with the night automatic?

3. Export file names
4. Here again, as with the Open online interface, the **FTP configuration** is entered. In addition, by setting the check mark at **Start synchronization on this computer**, define which computer should take over this task.

The export can also be started manually at any time with **Start now** (F3).